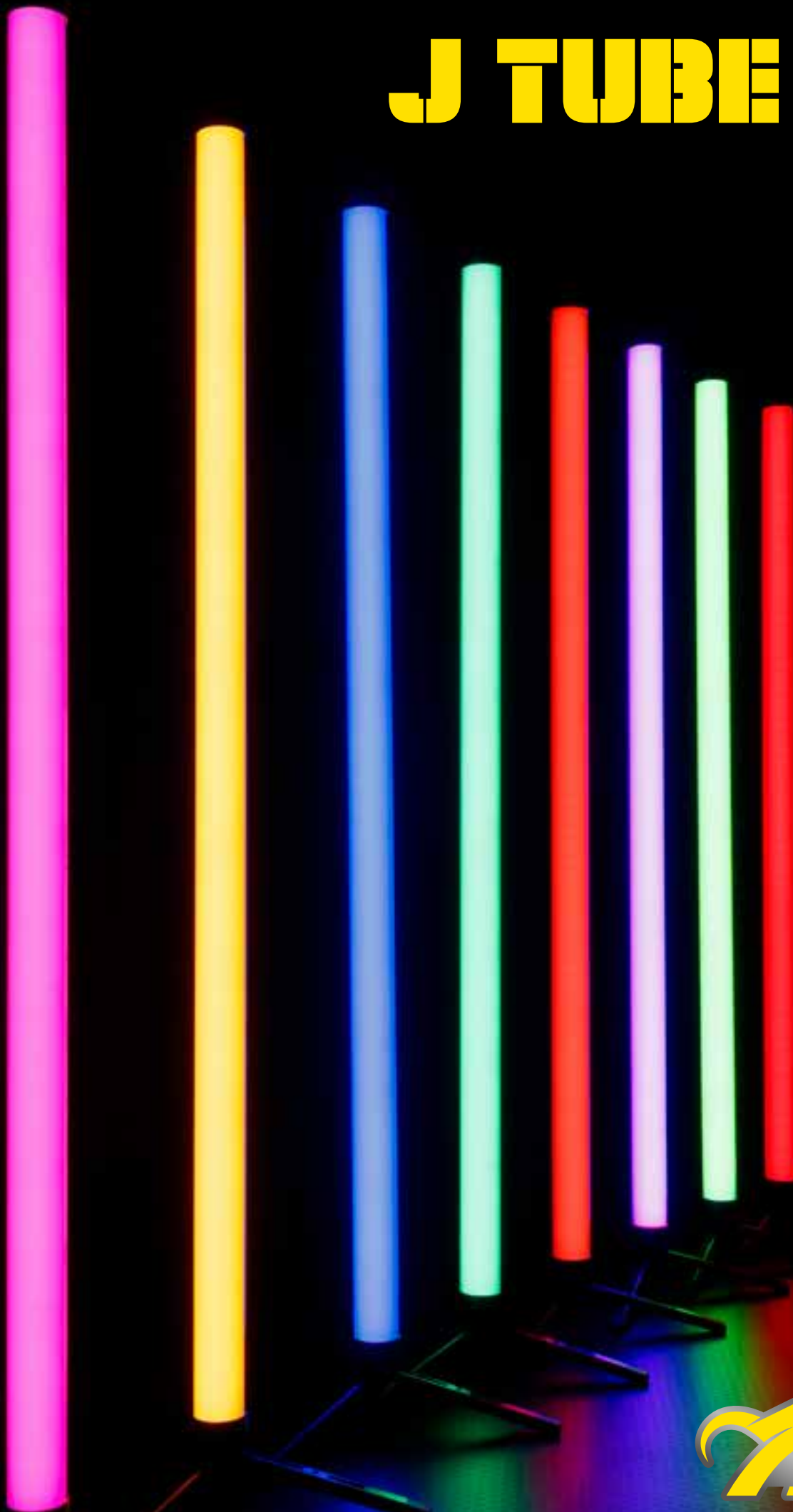


# J TUBE X1



**SDJ** expands its range of battery-powered products with the **J TUBE X1**, a concentration of design, technology, and versatility at the service of creativity, the ultimate tool for film-makers, TV studios, and exclusive events.

## LED SOURCES

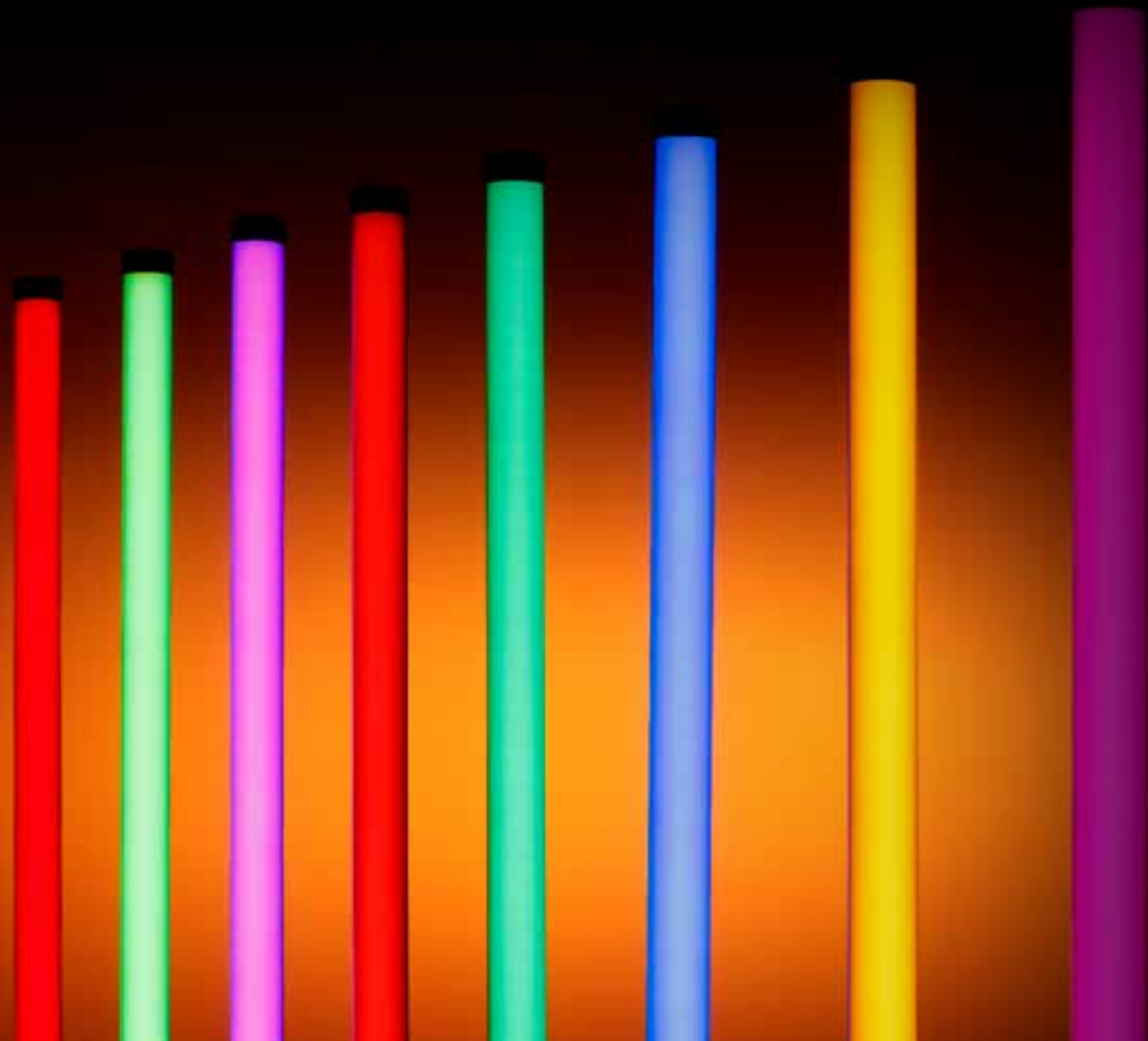
---

Equipped with 320 RGB+Amber+Mint LEDs, the J TUBE X1 offers a wide color gamut and a CRI $\geq$ 95, essential requirements where precise tones and light emission as close as possible to natural light are needed.

## OPTICAL SYSTEM

---

One of the distinctive features of the J TUBE X1 is the special front opal filter, designed to diffuse the LED light uniformly, perfectly emulating the neon-like effect of diffuse light without harsh shadows. This type of lighting is perfect for modern designs or specific scenic setups.



**J TUBE X1**



## DESIGN

---

The structure of the J TUBE X1 is made of aluminum, a material known for its combination of strength, lightness, and excellent heat dissipation, necessary to maintain an optimal operating temperature for consistent and long-lasting LED performance.

## WEATHER RESISTANCE

---

The IP54 certification ensures that the J TUBE X1 is protected from dust and water splashes from any direction, making it suitable for both indoor and outdoor use, where exposure to unpredictable weather conditions is possible.

## CONTROL

---

The COLOR button is designed to give the operator quick and easy access to color temperature adjustments, over 101 COLOR MACRO, and STATIC COLOR mode. Dynamic effects and preset macros allow for quick atmosphere changes, adapting to any situation, from live shows to artistic performances or immersive installations. Thanks to the pixel-mappable functionality across 16 zones, it's possible to create highly complex and customized lighting effects, ideal for those looking to captivate an audience. The integrated wireless DMX transceiver enables advanced control without the need for additional cables, a particularly useful feature in all contexts where quick setup and remote control of the lights are required. With the wireless technology used, the J TUBE X1 can operate in signal reception or transmission mode, allowing the master/slave function between lights without the need for an external dedicated DMX controller.



## KEY FEATURES

### Light source

320x0,5W LED RGB+Amber+Mint (64R - 64G - 64B - 64A - 64M)

LED lifespan: > 50.000h

LED refresh frequency: >15 KHz flicker-free

CRI ≥ 95 Ra

### Optic system

Beam Angle: 135°x115°

### Color system

LED source RGB+Amber+Mint (64R - 64G - 64B - 64A - 64M)

Infinite chromatic possibilities

### Effects

Linear dimmer 0-100%

Adjustable strobe effect

Pixel control 16 sectors

### Control and programming

7 DMX configurations available: 2/3/5/12/48/80/87 channels

Protocol USITT DMX 512

Built-in wireless DMX transceiver

Master/Slave mode

Static Color mode

Auto mode with 30 programs selectable from the display,  
with speed adjustment

Color mode with 101 color macros and 112 white macros

Color calibration system

Power management system

4 different dimming curves available

### Structure and cabinet

Die cast aluminum housing

Color LCD display

Front opaline plexiglass

IP54 rating

1/4-20 UNC thread connection terminal

### Power supply

Input Voltage: 18VDC – 5A

Switching power supply unit

Rechargeable internal Li-Ion battery: 14,4VDC 6400mAh

Runtime battery: ~ 1h:45m (full ON - Boost power mode)

Runtime battery: ~ 3h:50m (Color change - Boost power mode)

Charging cycle: ~ 6 hrs (Projector turned off)

Max power: 70W

External power supply included IN AC 100-240V, 50/60 Hz -

OUT 18VDC - 5A

### Weight and dimensions

Net weight: 1,35 kg

Dimensions: 1060xØ44 mm

**CODE: SG JTUBEX1**

**CODE: SG JTUBEX1BT**

*Version with APP control*



## APP FOR CONTROL

Available on the model [SG JTUBEX1BT](#)

To make control accessible to everyone, a radio control technology with a dedicated VISION CONTROL App has been integrated. Through its intuitive interface, you can easily check and adjust every parameter of the J TUBE X1, create static programs, and complex dynamic effects with a simple touch, without the need for cables or bulky controllers, allowing both professionals and non-professionals to work with ease, creativity, and precision.



## FLEXIBILITY OF USE

The wide range of optional accessories makes the J TUBE X1 the ideal tool for those seeking creative, flexible, and easy-to-use lighting solutions. The integrated battery makes the J TUBE X1 extremely versatile, eliminating the need for bulky cables and allowing its use in any location, even the most difficult to reach. In film sets, this feature is crucial for creating quick and adaptable installations.

SG JTUBE1XCON1



SG JTUBE1XCON2



SG JTUBE1XCON3



SG JTUBEX1STAND

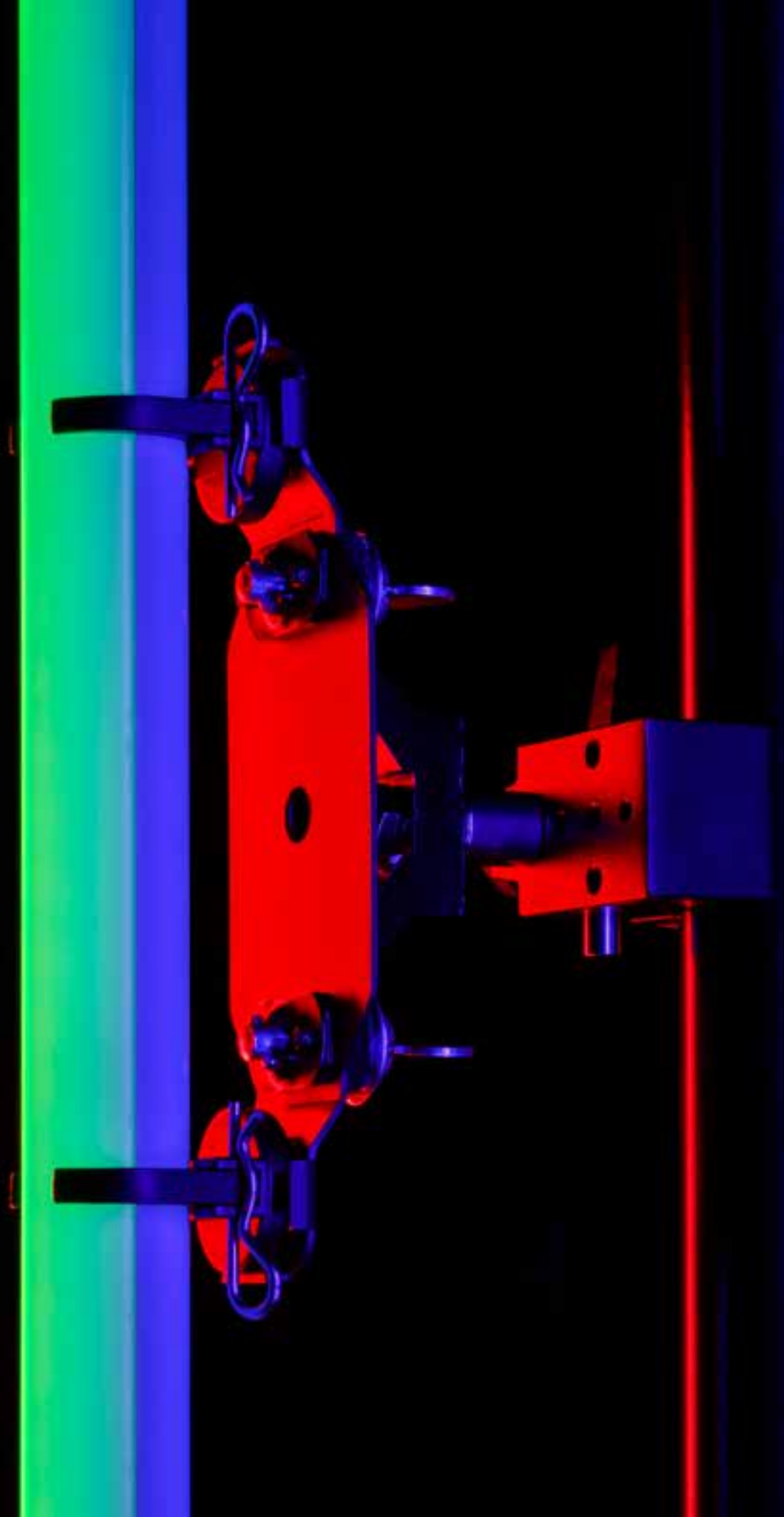


### SG JTUBEX1CLAMPT

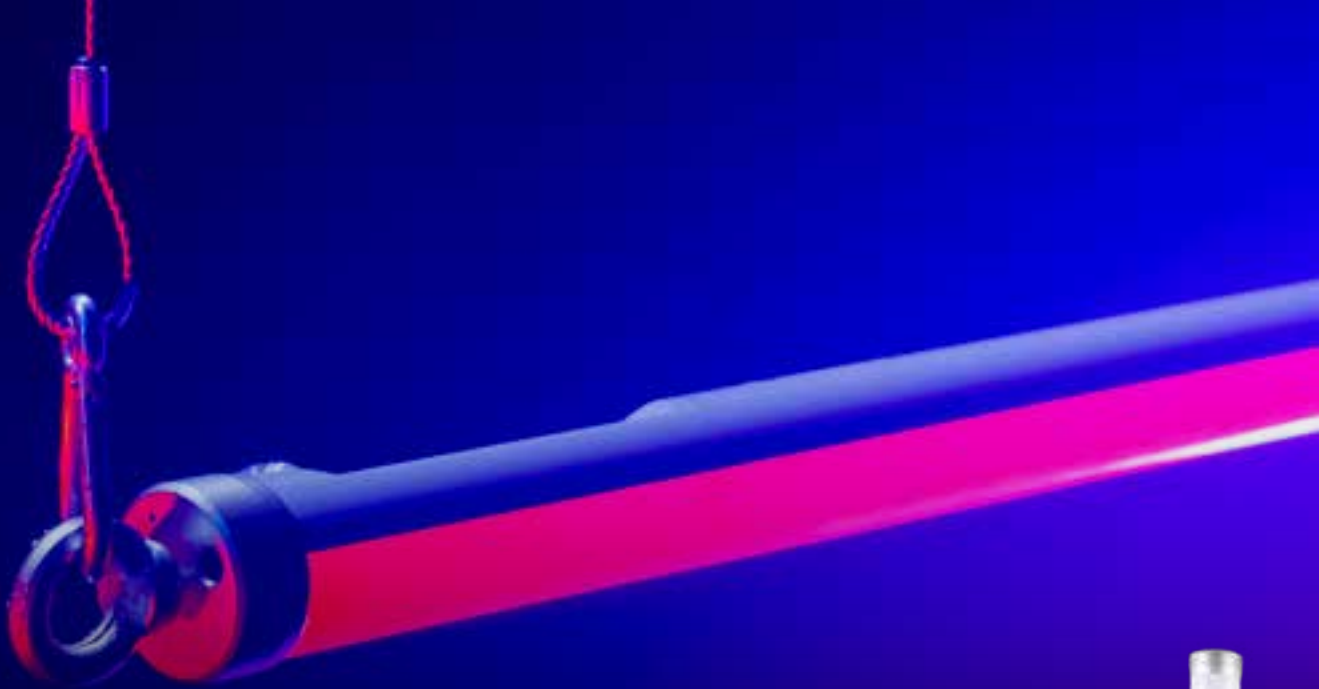
The Omega bracket and 2 pieces of JTUBEX1CLAMP are included



### SG JTUBEX1CLAMP







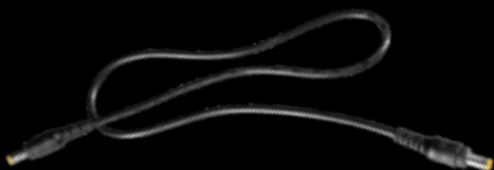
## “AC FAILURE” FUNCTION

For maximum versatility, the J TUBE X1 provides a power range for any work situation, and it also includes the “AC Failure” function, a very useful feature that allows it to be used as emergency lighting when connected to the mains with the dedicated power supply or an optional multiple power supply.



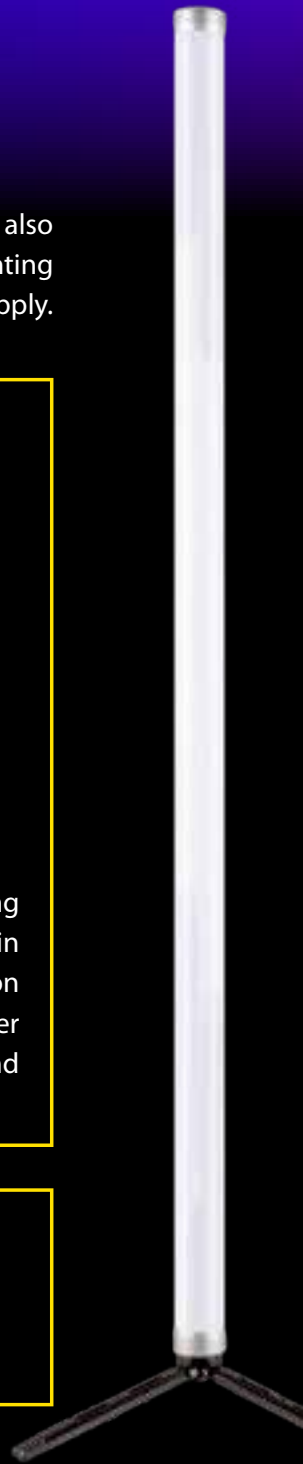
### SG JTUBEX1BOX

It supports simultaneous charging of 8 tubes or provides continuous power to 4 tubes, offering a convenient and centralized solution for multiple units. This is particularly advantageous in professional environments such as photo studios, film sets, or events where continuous operation is critical. This makes it ideal for permanent installations requiring a stable and reliable power source, avoiding interruptions due to frequent battery charging. Omega bracket for hanging and 8 charging/power cables included



### SG JTUBEX1PWR3 - SG JTUBEX1PWR5

Extension cables available in lengths of 3 and 5 meters



## TRANSPORT SOLUTION

A wheeled case made of polypropylene (PP) has been designed, offering a practical and reliable solution for transporting 8 tubes complete with accessories. Its lightweight yet sturdy construction, integrated charging system, and organized internal space make it an essential item for professionals.



SG JTUBEX1BAG

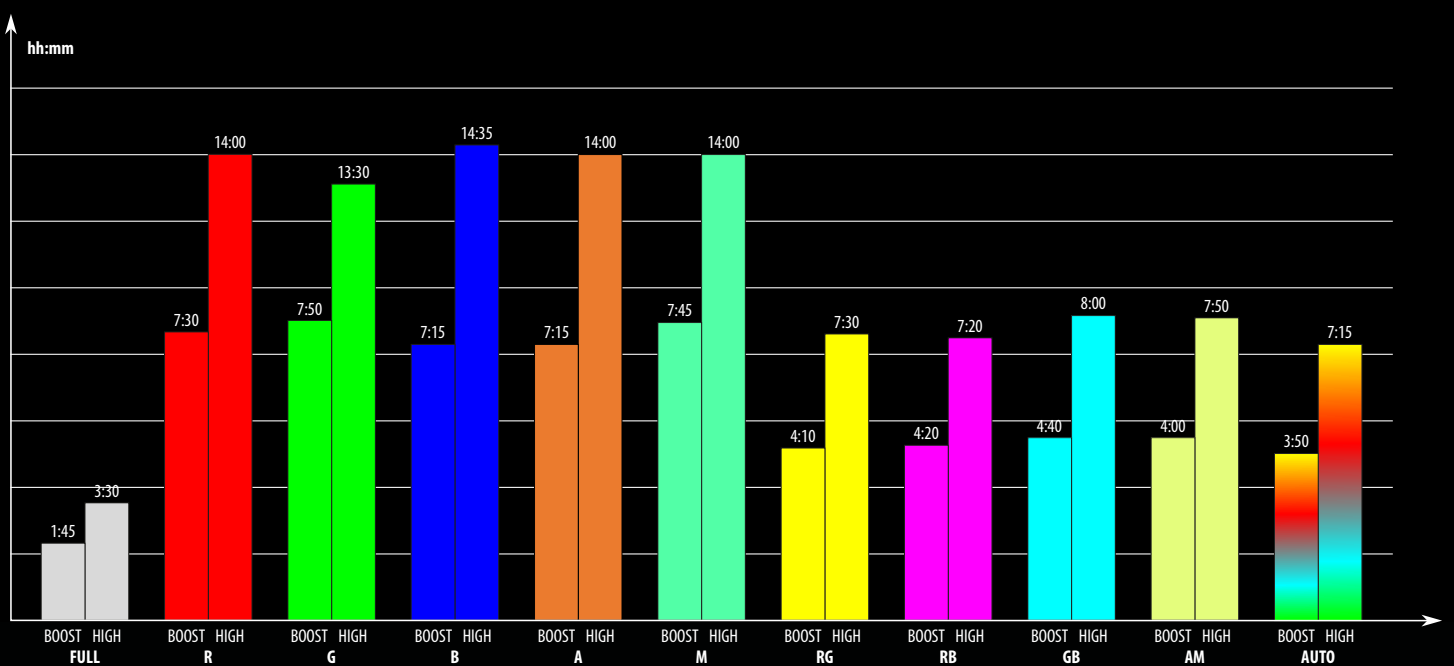




## BATTERY LIFE

The graph shows battery life in relation to the use of color combinations.

(Full power - Red - Green - Blue - Amber - Mint - Red+Green - Red+Blue - Green+Blue - Amber+Mint - Color change).



# ENJOY YOUR LIGHTING



is a brand of **PROEL SPA**  
(Worldwide Headquarters)  
Via alla Ruenia, 37/43  
64027 Sant'Omero (TE) - ITALY  
Tel. +39 0861 81241  
Fax +39 0861 887862  
P.I. 00778590679  
N.Reg.AEE IT 08020000002762

[sdjlighting.com](http://sdjlighting.com)

SG JTUBEBROC25E